

Research on the Connection between Architectural Murals and Architectural Environment Based on Public Cultural Service Function

Jia HAO

Liaoning Media College, Shenyang, Liaoning 110136, China

Keywords: Mural; public culture; art form; architecture

Abstract: Architectural space is closely related to people's daily life, and has attracted people's attention. With the improvement of our material and cultural requirements, people pay attention not only to their own houses, but also to spiritual communication. Today, with the rapid development of science and technology, people's life is becoming increasingly rich, and the concept of mural art has new development and changes in its functional forms and materials. The design of modern architectural murals emphasizes the spatial characteristics and the value of independent entities. Today, the public is no longer satisfied with the simple functional requirements of modern urban architectural space, but shows great concern for the cultural forms in modern urban architectural space. By explaining the definition, characteristics and public cultural service function of mural painting, this paper discusses the nature, characteristics and functions of mural painting as a public art form, and emphasizes the importance of the relationship between architectural mural painting art and its space environment.

1. Introduction

Mural is one of the earliest painting forms in human history. Throughout the history of art, art and architecture, the development and design of murals are always closely related to the development and design of architecture [1]. The building is composed of six walls. Because the four walls are parallel to people's line of sight, people's line of sight always falls on the wall at the first time whether they are inside or outside the building [2]. Architectural space is closely related to people's daily life, and has attracted people's attention. With the improvement of our material and cultural requirements, people are not only concerned about their own houses, but also begin to pay attention to spiritual communication [3]. Murals exist in the architectural space environment through the visual space art, and interact with the architectural space environment. Therefore, the creation of murals should be consistent with the architect's design intention, and take into account the final atmosphere and effect of murals [4]. For urban architectural space, we should not only meet the basic living material space of urban people, but also meet the spiritual needs of urban people. With the rapid development of science and technology, people's life is increasingly rich today, the concept of mural art has new development and changes in its functional forms and materials [5].

Architectural environmental space is divided into external space and internal space, which is limited by a variety of elements. Due to the different functions of environmental space, it is also required to shape different "character" space [6]. As one of the earliest painting forms in human history, mural can be traced back to the stone age of primitive society, and is an independent plastic arts discipline [7]. It mainly refers to the wall paintings of decorative buildings, which are paintings made on natural or artificial walls by drawing, sculpture and other modeling techniques or technological means. They are divided into indoor murals and outdoor murals [8]. Murals are integrated with their environment, and with their own content, form, style, material coordination, cooperation, supplement and sublimation of the environment, the architectural environment has a strong cultural and artistic atmosphere. The design of modern architectural murals emphasizes more on the spatial characteristics and the value of independent entities [9]. Today, the public is no longer satisfied with the simple functional needs of modern urban architectural space, but shows great concern for the cultural form of modern urban architectural space. Therefore, a complete

architectural space design should be a perfect combination of function and aesthetics, that is, to play its functional effect, but also have aesthetic. Combined with the current situation of murals in the new era, we can use special means of expression to change the spatial form of architectural space, so as to produce good spatial effect.

2. Related concepts and development of murals

Unlike other easel paintings or scroll paintings, frescoes have flexible mobility. Most of the frescoes are produced directly on buildings or installed on buildings after pre-production, so it is difficult for frescoes to change and change their positions at will. Mural design mostly serves the architectural space environment, so the choice of mural theme should be limited by the specific architectural space and meet the specific situation and functional requirements of architectural space. The use functions of architectural spaces are different, so many different architectural spaces are produced. Architectural spaces with different functional requirements require murals with different themes and contents to adapt to them, or work together to create a spatial situation or improve the spatial experience. The richness of architecture itself endows murals with wide and varied scale forms. The application of frescoes in architecture, from a small decoration in the corner of indoor wall to a huge painting covering the facade of the whole building, is not only clear at a glance in two-dimensional space. The choice of architectural mural theme should conform to the law of different functional requirements of architectural space, and at the same time, make full use of the respective use characteristics of architectural space. By consciously choosing the mural narrative in architectural space, the appreciator can get clear information and make different responses, and then further improve the function of architectural space in visual effect and psychological effect [10]. From the perspective of visual psychology, people's eyes are usually attracted by moving and changing image objects. This shows that the essence of human psychology is to pursue change, and a monotonous and unchangeable architectural space environment will cause psychological discomfort, even resentment and conflict. However, too disorderly space will interfere with people's psychological order in a specific space, which will not produce a certain psychological aesthetic feeling.

Mural painting is used in architecture and interacts with architectural space. The junction of wall, ceiling and ground, and the turning point between walls can become the application site of mural painting. The scale of frescoes is reflected in the flexibility of sight distance, the continuity of vision and the timeliness of viewing. From the aspect of mural art design, the theme content of mural is generally closely related to the function of architectural space, and architectural spaces with different functions need to be created with murals with corresponding or related themes, especially some architectural spaces with specific functional requirements, such as memorial buildings including memorial halls and memorial squares. Because of the particularity of its established environment, it has specific requirements on the subject matter of murals, which makes the content of murals in this space different from those decorated in daily environment. Moreover, viewers can obtain certain knowledge and information from this mural, and the selection of mural subject matter should have certain commemorative significance and warning function. The characteristics of mural painting determine that its application in architectural design can not be ignored. Mural painting can not only participate in the change and re-creation of space environment, but its application in architectural design always reflects the importance of aesthetic appeal and cultural connotation of architecture. Mural painting must consider the use function of architecture, the coordination with architectural style, the linguistic limitation and particularity of materials and forms of expression, and give full play to one's talents from all kinds of constraints and limitations without reducing one's own effort under the condition of achieving low cost.

3. The relationship between mural art and modern urban architectural space

The remarkable feature of modern frescoes is publicity, which determines the essence of public environment art of modern frescoes in modern life, and also determines the aesthetic characteristics

of modern frescoes in symbiosis with urban public space environment, which are different from those of ancient frescoes. Architectural space is closely related to people's daily life, and has attracted people's attention. Today, the public is no longer satisfied with the most fundamental functional requirements of modern urban architectural space, in addition, it also needs to meet the aesthetic requirements of people's certain spiritual feelings. Modern city mural is an organic component of modern urban architectural environment. It breaks the monotony and dullness of modern urban architecture, makes it have its own color and image connotation, makes the real environment full of human touch, and becomes an important medium and means to spread public thoughts and aesthetic concepts.

Mural painting, as an important part of environmental art, is different from ordinary painting forms, neither aiming at creating a work of art in isolation, nor simply enlarging the drawings on paper to the wall. Therefore, when designing mural painting, the creators must fully understand the architectural features of mural art, and at the same time, thoroughly comb and study the relationship between mural art and architectural space. The operation process of modern building cooperative design is shown in Figure 1.

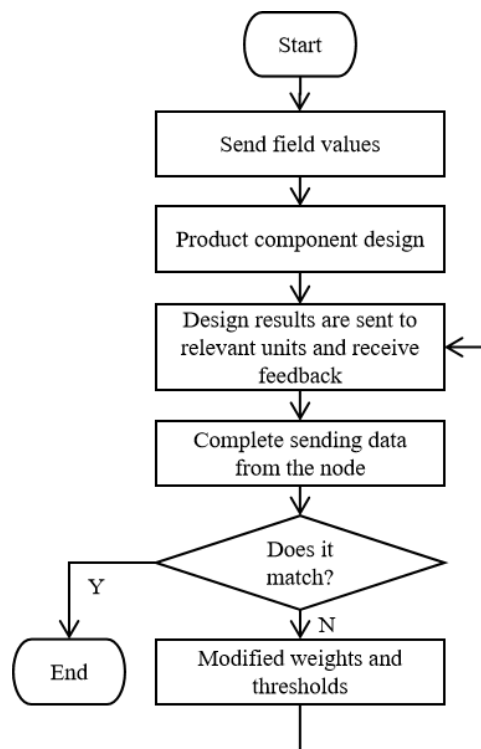


Figure 1 Cooperative design operation process

Nowadays, mural art has increasingly become an important embodiment of urban civilization and an important means of spiritual civilization education in the urban public space environment, and has become a carrier of spreading culture to the public. It embodies the unique spirit of the environment, promotes the artistic character and humanistic value of the space environment, and promotes the cultural taste of the city. The functional expression of contemporary mural materials in architectural environment can not be separated from the organic combination with humanistic factors. As a public art, contemporary material mural has become an organic part of the architectural environment. If its modeling elements are organically linked with the style, culture and history of a region, it will become an interesting art work because it shows the unique character and expression of the regional humanistic environment [11].

The strengthening of modern urban architecture's functional consciousness makes it increasingly become a complex composed of different functional areas and different spatial structures. With the development of modern building technology and the application of modern building materials, it is possible to meet people's architectural space needs. Mural painting has not changed its common essence with other painting types, and it expresses its deeper pursuit of social function and aesthetic

value through painting materials or technological means. Figure 2 shows the temporal relationship among the different stages of construction technology.

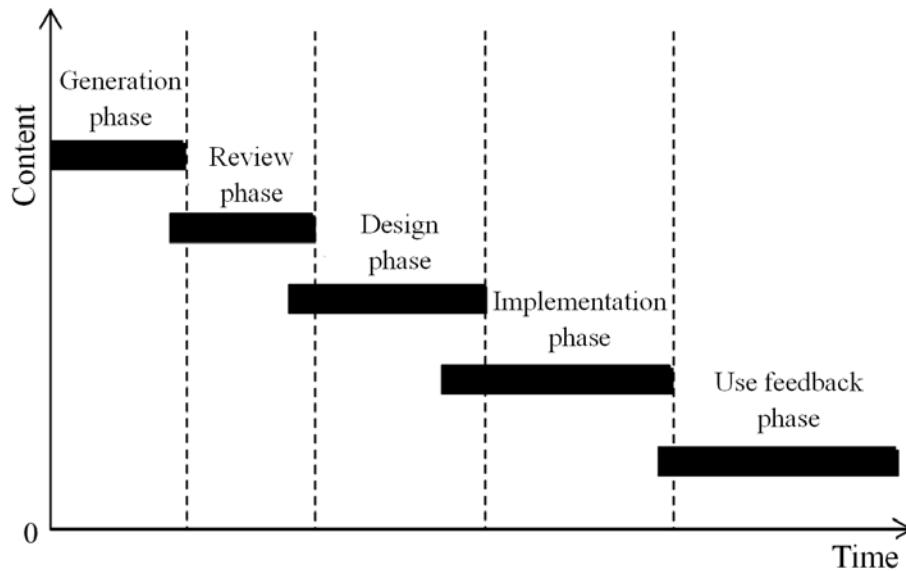


Figure 2 The relationship in time between the various stages of construction technology

Murals have great coverage and appeal to space, which can attract and satisfy people and lose interest in learning. The whole mural conveys the national sentiment of the Chinese nation in the form of concentric circles, which has strong national cultural characteristics. Only by combining the specific cultural, historical and regional characteristics, and then strengthening the cultural character and humanistic color of the region, can the self-evident, eternal characteristics and historical and cultural characteristics of the region be publicized. In today's information age, due to the disappearance and dilution of "the world is the same" and "local culture" caused by globalization, the creation of contemporary material frescoes with maintaining and strengthening the cultural character and humanistic color between regions is extremely precious. In the space environment of architecture, frescoes do not destroy the space environment of architectural entities. The subordination of architectural space is one of the important characteristics of mural art, which requires that mural creation should not only take architectural physical space as the carrier, but also act on architectural space, instead of being an independent painting, and never be the mechanical addition of mural and architecture. Mural painting can organically combine spatial form with functional requirements, thus forming an organic integration with architectural space environment.

4. Conclusions

With a series of profound changes in Chinese society and the influence of modern architectural pragmatism, the artistic concept of contemporary frescoes presents more diversified artistic features. Mural painting is an ancient and young art category, which has been endowed with new contents in the new historical period. It is no longer a tool for spreading religion, but an art category for creating function and spiritual space for beautifying the environment. The creation of contemporary material frescoes is not only an interpretation of the environment, but also an expansion of the environment, which makes a specific and limited space sublimates into a world with some abstract meaning and artistic flavor. Mural painting should not only integrate with the architectural space environment as a whole, but also show its own value and significance. The architectural space environment and frescoes exist independently, but they can form a whole and depend on each other under the interaction. Guided by the trend of modern art and design, and on the premise of science and technology, the value and function of frescoes in the new period have been fully displayed and respected. It is the inevitable result of social development that frescoes enter the urban architectural environment in the new period.

References

- [1] Yao Xiangjun. Research on the relationship between murals and natural space in architecture and public space. *Beauty and Times·City*, vol. 000, no. 12, pp. 71-72, 2017.
- [2] Zhang Hui. Analysis of public art and murals-the integration of architecture and art. *Tomorrow's Fashion*, no. 4, pp. 182-182, 2019.
- [3] Wei Erya. Public space mural art and urban cultural construction. *Journal of Hebei Software Vocational and Technical College*, no. 19, pp. 73-76, 2017.
- [4] Wang Junna. Research on the form of murals in public environment design. *Art Technology*, vol. 32(010), pp. 179-180, 2019.
- [5] Liu Zhiyun. The functional embodiment of contemporary material murals in the public building environment. *Modern Decoration (Theory)*, vol. 000, no. 4, pp. 220-221, 2016.
- [6] Liu Danyu. Exploration of Mural Art in Architectural Space Environment. *Chinese and Foreign Architecture*, vol. 000, no. 3, pp. 40-42, 2018.
- [7] Zhang Di. Analysis and Research on the Status Quo of Modern and Contemporary Mural Art Creation. *Fine Arts Circle*, vol. 000, no. 7, pp. 82-83, 2015.
- [8] Liu Shanshan. Discussion on the aesthetic development trend of modern and contemporary urban public art. *Beauty and Times (Urban Edition)*, vol. 000, no. 5, pp. 75-76, 2015.
- [9] Su Qi. Cooperative expression of mural language in environmental decoration. *Packaging World*, no. 5, pp. 68-69, 2015.
- [10] Zhang Ji. The application of murals in modern Chinese architectural design. *Building materials and decoration*, vol. 000, no. 29, pp. 25-26, 2017.
- [11] Gao Lei. The "Prisoner's Dilemma" and Outlet of Modern Architecture and Murals. *Art Education*, no. 23, pp. 154-155, 2017.